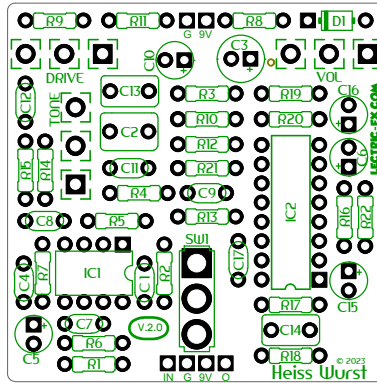


Heiss Wurst V.2.0

© LECTRIC-FX.COM

02/20/2023

Compare to EHX HOT TUBES™



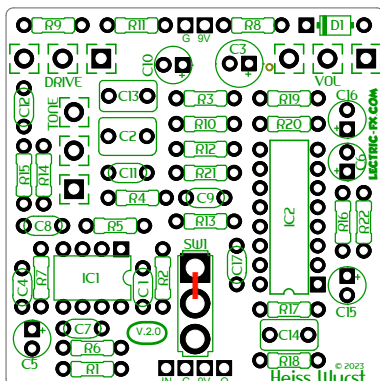
The Lectric-fx “Heiss Wurst” is a CMOS OD using the CD4049UBE with extra filtering. It runs off your standard 9V adapter.

No changes were made to the circuit itself, but V2 features an improved layout, resulting in much lower noise when the drive control is dimmed.

It can be built stock with 3 knobs and one toggle. The switch enables/disables the tone control. If you build it this way, ignore the illustrations below.

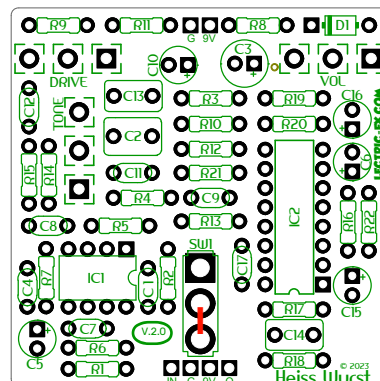
You can also leave off the toggle switch if desired (see illustrations below), and build it with 3 knobs (tone always enabled), or with only volume and drive controls (tone always disabled), by hard-wiring a couple of switch pads.

All 3 Knobs, No Toggle Switch



Place this jumper on switch pads

2 Knob VOL & DRIVE Only, No Tone, No Toggle Switch



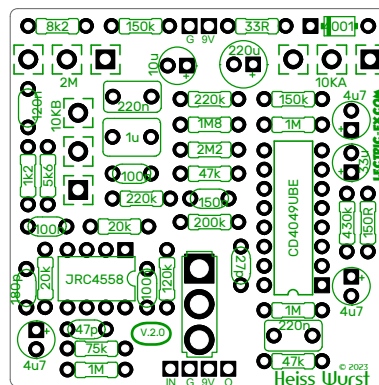
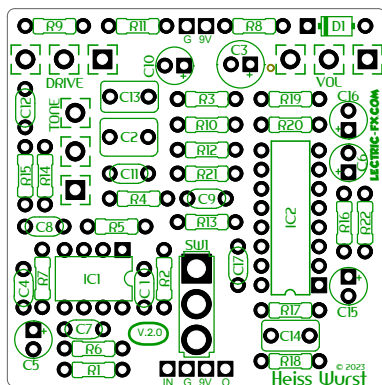
Place this jumper on switch pads

B.O.M.

1/4W RESISTORS	
R1	1M
R2	120k
R3	220k
R4	220k
R5	20k
R6	75k
R7	20k
R8	33R
R9	8k2
R10	1M8
R11	150k
R12	2M2
R13	200k
R14	5k6
R15	1k2
R16	430k
R17	1M
R18	47k
R19	150k
R20	1M
R21	47k
R22	150R

CAPS	
C1	100n
C2	1uF film
C3	220u
C4	180p
C5	4u7
C6	33u
C7	47p
C8	100n
C9	150n
C10	10u
C11	100n
C12	120n
C13	220n
C14	220n
C15	4u7
C16	4u7
C17	27p

DIODES	
D1	1n4001
IC's	
IC1	JRC4558
IC2	CD4049UBE
SWITCHES	
TONE BYPASS	SPDT
POTS	
VOL	10KA
TONE	10KB
DRIVE	2MB

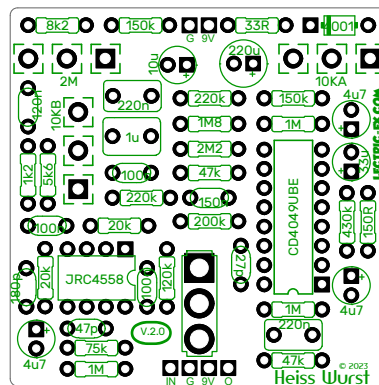
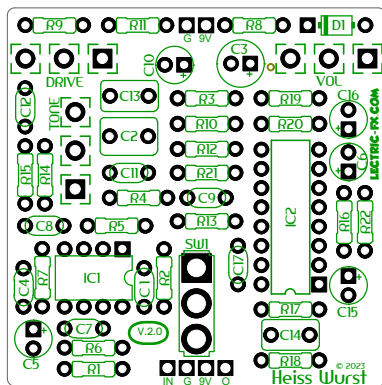


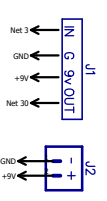
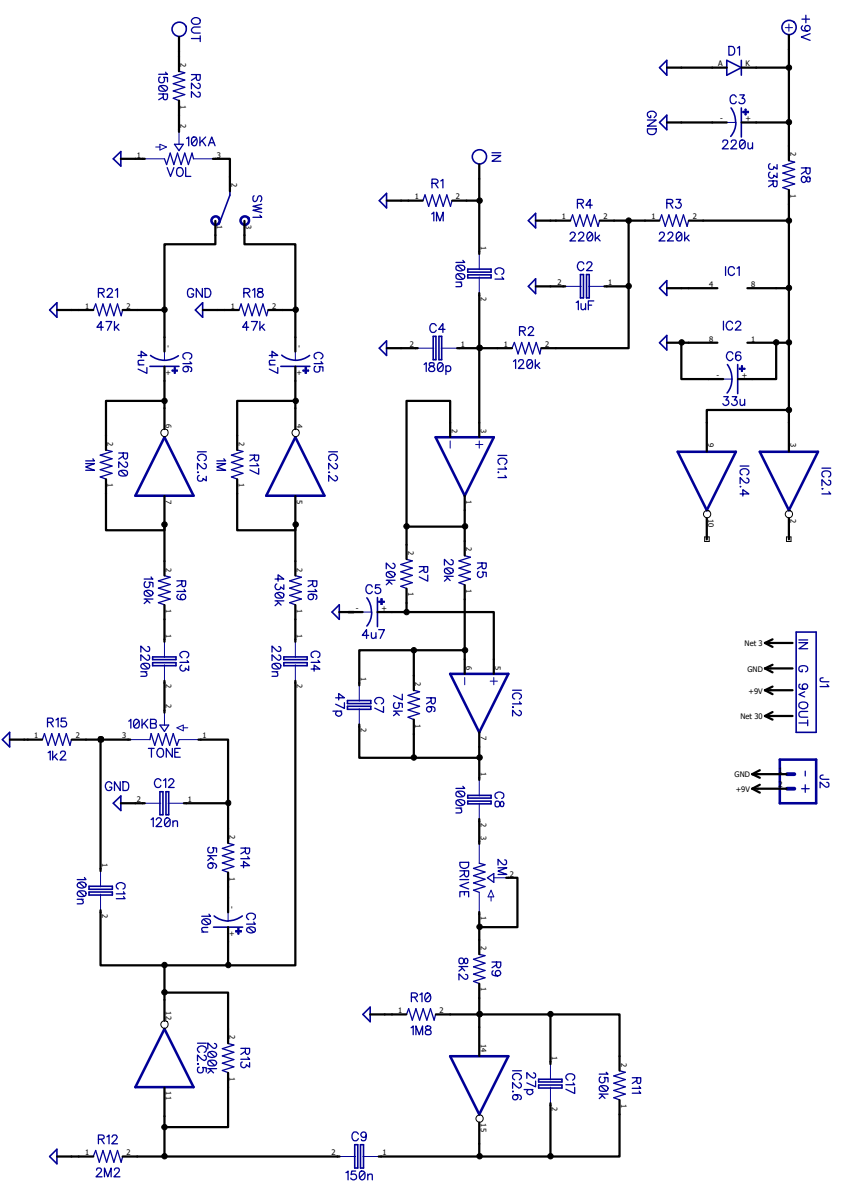
QTY's

RESISTORS	
1	33R
1	150R
1	1k2
1	5k6
1	8k2
2	20k
2	47k
1	75k
1	120k
1	150k
1	200k
2	220k
1	430k
3	1M
1	1M8
1	2M2

CAPS	
1	27p
1	47p
1	180p
3	100n
1	120n
1	150n
2	220n
1	1uF Film
3	4u7
1	10u
1	33u
1	220u

DIODES	
1	1n4001
IC's	
1	JRC4558
1	CD4049UBE
SWITCHES	
1	SPDT
POTS	
1	10KA
1	10KB
1	2MB





A B C D

1 2 3 4 5 6

Heiss Wurst 2.0

Size Number Rev

02/20/2023

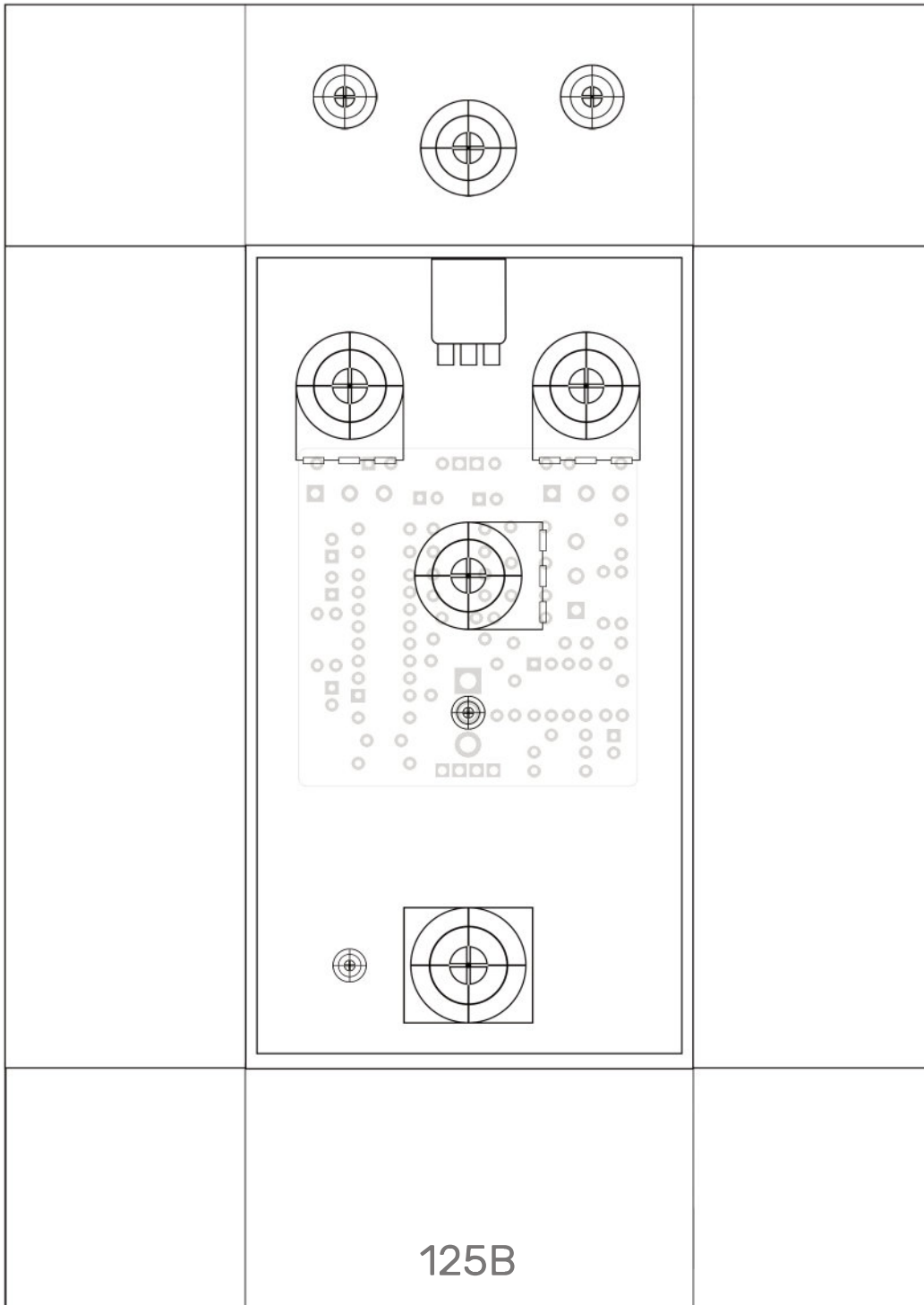
Filename Sheet

Drawn by Haberdasher

5 6

A B C D

Drill Guide Suggestion



Note: Side mount i/o/dc jacks should also fit, and if you go that route, the entire pcb/pots/jack/spdt assembly can move up a bit for a little more room. This pcb should also fit in a 1590b, but hand wiring pots may be necessary.